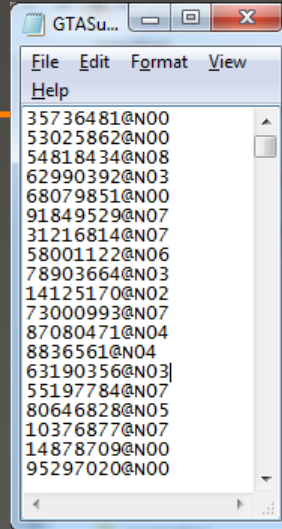
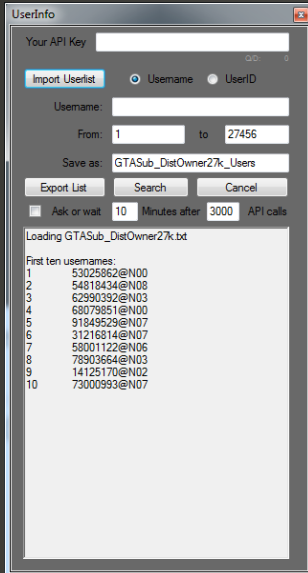


Workshop part 4: User origin

- What is the origin of photographers who took photos in an area?



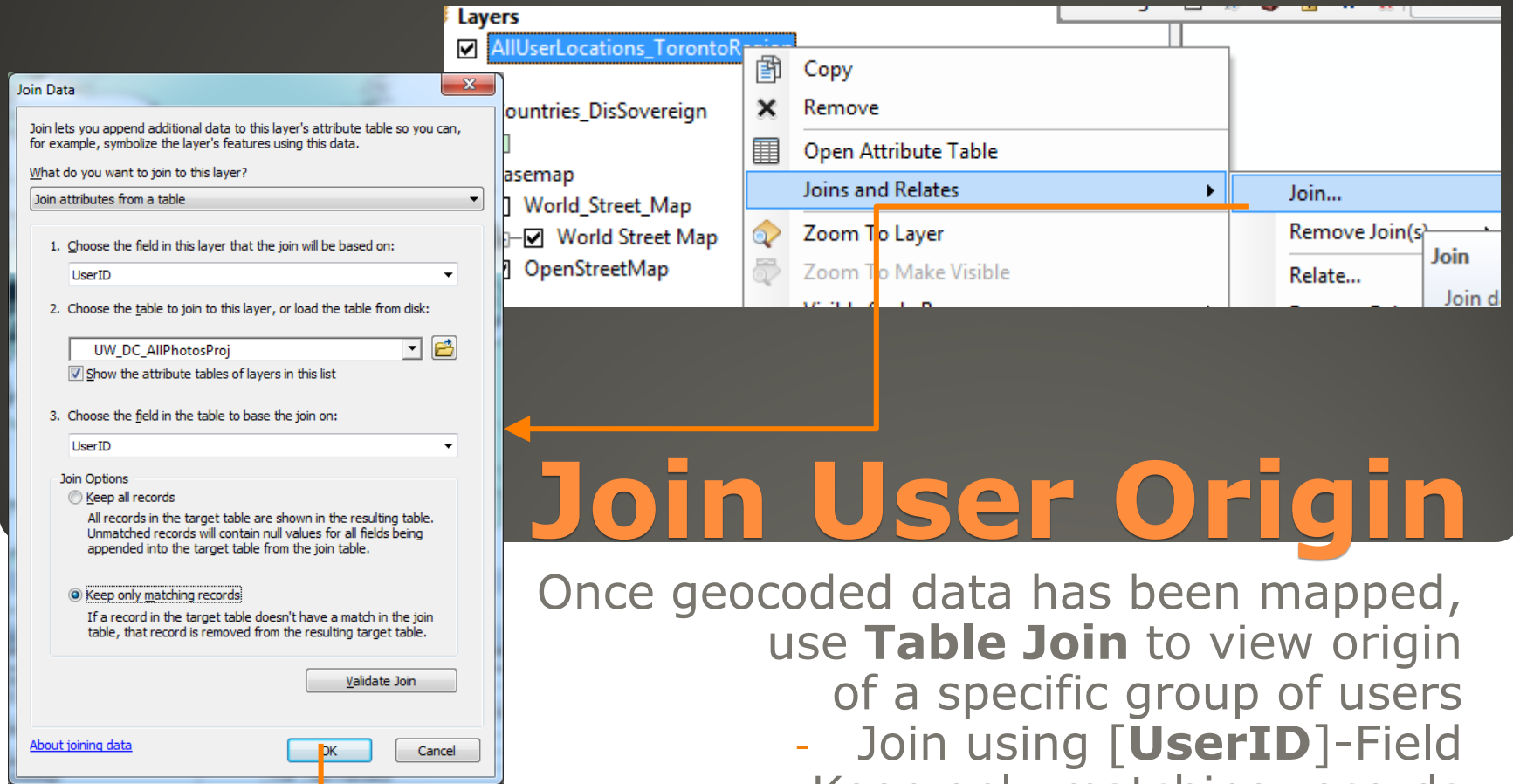
Approach

- Some users provide information on their origin within their public profile (about 40% to 50% of users)
- This information can be retrieved using the Flickr API, based on a list of users (e.g. from a specific photo dataset)
- For retrieving User information from Flickr, first **Dissolve UserID and save list as *.txt file**
 - Import list to GetGeo.exe / UserInfo Tool, and retrieve data

Location	
Toronto	
Toronto, Canada	<
New York, NY, United States of America	E
Ashtabula, Ohio	I
Toronto, Canada	
Niagara Falls, NY, United States	
San Francisco	<
Vancouver, Canada	D
Mississauga, Canada	
Toronto, Canada	A
Vancouver, Canada	
England	
Porto Alegre, Brazil	E
Toronto, Canada	
Canada	
Canada	
San Francisco, CA, USA	
Unionville, Canada	<
Canada	

Geocoding data

- To map data in ArcGIS, user information must first be **geocoded** (converted to coordinates)
 - **This has been done for the GTA photo data, open BasemapLayout_World.mxd** and go to next slide, otherwise follow steps below..
 - The **accuracy of the information varies** to a large degree (street level to state level accuracy)
 - Some information can not be geocoded ("I live somewhere in the desert")
 - Several services offer free geocoding, for example Bing Maps API; **1. register for Bing API Key, 2. dissolve user location list, and 3. geocode this list** (e.g. <http://www.gpsvisualizer.com/geocoder/>)



Join User Origin

- Once geocoded data has been mapped, use **Table Join** to view origin of a specific group of users
- Join using [**UserID**]-Field
 - Keep only matching records (**Validate Join** to see matching records)
 - **Spatial Join** Countries Shapefile for classifying Users (based on common Cultures/Groups)

