

RESEARCH ARTICLE

# A note on the justification of the eddy current model in electrodynamics

Dirk Pauly<sup>1</sup> | Rainer Picard<sup>2</sup>

<sup>1</sup>Fakultät für Mathematik, Universität Duisburg-Essen, Campus Essen, Essen, Germany

<sup>2</sup>Institut für Analysis, Technische Universität Dresden, Dresden, Germany

## Correspondence

Dirk Pauly, Fakultät für Mathematik, Universität Duisburg-Essen, Campus Essen, Essen, Germany.  
Email: dirk.pauly@uni-due.de

Communicated by: H. Ammari

MOS Classification: 35Q61; 78A25; 78A48

The issue of justifying the eddy current approximation of Maxwell's equations is reconsidered in the time-dependent setting. Convergence of the solution operators is shown in the sense of strong operator limits.

## KEYWORDS

eddy current problem, electrodynamics, evolutionary equations, material laws

## 1 | INTRODUCTION

Somewhat simplified, the topic of this paper is the study of the limit  $\varepsilon \rightarrow 0+$  in the standard Maxwell system in a nonempty open set  $\Omega \subseteq \mathbb{R}^3$ , which in convenient block operator matrix notation is given by

$$\left( \partial_0 \begin{pmatrix} \varepsilon & 0 \\ 0 & \mu \end{pmatrix} + \begin{pmatrix} \sigma & 0 \\ 0 & 0 \end{pmatrix} + \begin{pmatrix} 0 & -\text{curl} \\ \text{curl} & 0 \end{pmatrix} \right) \begin{pmatrix} E \\ H \end{pmatrix} = \begin{pmatrix} -J \\ K \end{pmatrix},$$

with the limit case  $\varepsilon = 0$  being the so-called eddy current case. Here, following standard physics notation  $\partial_0$  denotes the time derivative,  $E, H$ , denote the electric and magnetic field, respectively, and  $J, K$  corresponding external source terms,  $\varepsilon$  denotes the dielectricity and  $\mu$  the magnetic permeability, and  $\sigma$  denotes the conductivity. The overset circle in  $\text{curl}$  is supposed to indicate that the so-called electric boundary condition is imposed on  $E$ , which makes  $\begin{pmatrix} 0 & -\text{curl} \\ \text{curl} & 0 \end{pmatrix}$  skew-selfadjoint in  $L^2(\Omega, \mathbb{C}^3 \times \mathbb{C}^3) \cong L^2(\Omega, \mathbb{C}^6)$ . For the purpose of this introduction, we may think of  $\varepsilon, \mu, \sigma$  simply as nonnegative real numbers. The approximation question  $\varepsilon \rightarrow 0+$  has been considered in the literature commonly in the second-order form, where  $H$  has been eliminated from the equations, ie, the equations discussed are not Maxwell's equations but rather the abstract wave equation

$$\varepsilon \partial_0^2 E + \sigma \partial_0 E + \text{curl} \mu^{-1} \text{curl} E = -\partial_0 J + \text{curl} \mu^{-1} K =: -\tilde{J}.$$

Following common wisdom indeed a time-harmonic regime is assumed, where  $\partial_0$  is replaced by  $i\omega$ , where  $\omega$  is a real number referred to as frequency, leading to

$$(\varepsilon \omega^2 - i\omega \sigma) E - \text{curl} \mu^{-1} \text{curl} E = \tilde{J}.$$

Because of the selfadjointness of  $\text{curl} \mu^{-1} \text{curl}$  in  $L^2(\Omega, \mathbb{C}^3)$ , we have that for  $\sigma \neq 0$ , the number  $\varepsilon \omega^2 - i\omega \sigma$  is actually in the resolvent set of  $\text{curl} \mu^{-1} \text{curl}$  and so the limit  $\varepsilon \rightarrow 0+$  is well controlled by the analyticity of the resolvent

$$z \mapsto (z - \text{curl} \mu^{-1} \text{curl})^{-1}$$

on  $\mathbb{C} \setminus [0, \infty[$ . The situation is less clear if  $\varepsilon, \sigma$  are allowed to vary—say they are piecewise constant. For example, there may be a decomposition of  $\Omega$  into a relative compact, nonempty, open subset  $\Omega_c \subseteq \Omega$ , where  $\sigma = \sigma_c > 0$  and  $\varepsilon = \varepsilon_c \geq 0$ , and the rest, where  $\sigma = 0$  and  $\varepsilon > 0$ . For bounded and sufficiently regular domains  $\Omega$  such that a suitable compact embedding result holds, the limit  $\varepsilon_c \rightarrow 0+$  can still be established and so a justification of the eddy current problem can be given. For a survey see Rodríguez and Valli<sup>1</sup> and the literature quoted there.

A dramatically different situation arises if  $\Omega$  is unbounded, eg,  $\Omega = \mathbb{R}^3$ . Then  $\sigma = 0$  becomes the dominant case with the material behavior in  $\Omega_c$  just being a compact perturbation. In this situation,

$$\varepsilon \omega^2 E - \operatorname{curl} \mu^{-1} \operatorname{curl} E = \tilde{J}$$

is our reference case, where now  $\varepsilon \omega^2 \in \mathbb{R} \setminus \{0\}$  is always in the continuous spectrum of the operator  $\operatorname{curl} \mu^{-1} \operatorname{curl}$ . Thus, in contrast to what seems to be claimed in Ammari et al,<sup>2</sup> a solution theory in  $L^2(\Omega, \mathbb{C}^3)$  is unavailable. The much more demanding issues involved to study such perturbation problems and to discuss limiting problems is well developed in connection with the solution theory for exterior boundary value problems and the study of low-frequency asymptotics in, eg, previous studies.<sup>3–10</sup> A comparison between the low-frequency asymptotics for the full time-harmonic Maxwell's equations and their eddy current approximation can be found in Pauly<sup>8</sup>, Satz 5.7 and Pepperl<sup>9</sup>, Kapitel

On the other hand, keeping in mind that time-harmonic problems are nonphysical in so far as they produce infinite energy solutions and merely serve to describe the time-asymptotic behavior in presence of a—perpetual—time-harmonic forcing, it seems appropriate to bypass the above spectral issues altogether by discussing the original—physical—dynamic system directly. This is the perspective of the following presentation, which is based on concepts derived in, eg, previous studies.<sup>11,12</sup> After a brief introduction into the needed framework, we discuss the limit to the eddy current case in full generality in Section 3. In particular, we emphasize that size and boundary regularity of the underlying domain  $\Omega$  play no role in the final result. This is due to the fact that the classical boundary trace results are superfluous for the basic solution theory and for obtaining the convergence result.

## 2 | THE FUNCTIONAL ANALYTICAL FRAMEWORK

Key to the approach presented here is to consider the closure of differentiation acting on  $C_1(\mathbb{R}, H)$ -functions with compact support, ie, functions in  $\mathring{C}_1(\mathbb{R}, H)$ , as an operator in  $H_\rho(\mathbb{R}, H)$  with  $\rho \in ]0, \infty[$ , a weighted  $L^2$ -type space with inner product

$$\langle \varphi | \psi \rangle_\rho := \int_{\mathbb{R}} \langle \varphi(t) | \psi(t) \rangle_H \exp(-2\rho t) dt,$$

where  $\langle \cdot | \cdot \rangle_H$  denotes the inner product of the Hilbert space  $H$ . The resulting operator

$$\partial_0 : D(\partial_0) \subseteq H_\rho(\mathbb{R}, H) \rightarrow H_\rho(\mathbb{R}, H)$$

turns out<sup>11,12</sup> to be normal with

$$\Re \partial_0 = \rho. \tag{1}$$

This observation implies that for bounded linear operators  $M_0 : H \rightarrow H$  and  $M_1 : H \rightarrow H$ , where  $M_0$  is selfadjoint, and for a skew-selfadjoint linear operator  $A : D(A) \subseteq H \rightarrow H$ , which is possibly unbounded, the relation

$$\Re \langle u | (\partial_0 M_0 + M_1 + A)u \rangle_\rho = \langle u | (\rho M_0 + \Re M_1)u \rangle_\rho \tag{2}$$

holds for all  $\mathring{C}_1(\mathbb{R}, D(A))$ . With the assumption that

$$\rho M_0 + \Re M_1 \geq c > 0 \tag{3}$$

for all sufficiently large  $\rho \in ]0, \infty[$ , we obtain that the closure  $\overline{\partial_0 M_0 + M_1 + A}$  and its adjoint  $(\overline{\partial_0 M_0 + M_1 + A})^* = \overline{\partial_0^* M_0 + M_1^* - A}$  both have continuous inverses bounded by  $1/c$ . In particular, the null spaces of  $\partial_0 M_0 + M_1 + A$  and  $(\partial_0 M_0 + M_1 + A)^*$  are both trivial and the ranges are closed and equal  $H_\rho(\mathbb{R}, H)$ . Thus, we have the following well-posedness result, see, eg, previous studies.<sup>11,12</sup>

### Theorem 1. (Solution Theory)

Let  $M_k : H \rightarrow H$ ,  $k = 0, 1$ , be continuous linear operators,  $M_0$  selfadjoint, such that (3) holds for some  $c \in ]0, \infty[$  and for all  $\rho \in ]\rho_0, \infty[$  with  $\rho_0 \in ]0, \infty[$  sufficiently large. Moreover let  $A : D(A) \subseteq H \rightarrow H$  be skew-selfadjoint. Then

$$\overline{(\partial_0 M_0 + M_1 + A)} u = f$$

has for any  $f \in H_\rho(\mathbb{R}, H)$  a unique solution  $u \in H_\rho(\mathbb{R}, H)$ . Furthermore,  $u$  depends on  $f$  continuously, ie,

$$\overline{(\partial_0 M_0 + M_1 + A)}^{-1} : H_\rho(\mathbb{R}, H) \rightarrow H_\rho(\mathbb{R}, H)$$

is a continuous linear operator for all  $\rho \in ]\rho_0, \infty[$  with norm bounded by  $1/c$ .

As a refinement of (2), we also find by integration by parts that for  $u \in D(\partial_0) \cap D(A)$  (and so for  $u \in D(\overline{(\partial_0 M_0 + M_1 + A)})$ )

$$\Re \langle u \mid \chi_{]-\infty, a]} \overline{(\partial_0 M_0 + M_1 + A)} u \rangle_\rho \geq c \langle \chi_{]-\infty, a]} u \mid \chi_{]-\infty, a]} u \rangle_\rho.$$

This yields that we have also causality in the sense of the following theorem.

**Theorem 2.** (Causality)

Under the assumptions of Theorem 1, we have

$$\chi_{]-\infty, a]} \overline{(\partial_0 M_0 + M_1 + A)}^{-1} = \chi_{]-\infty, a]} \overline{(\partial_0 M_0 + M_1 + A)}^{-1} \chi_{]-\infty, a]}$$

for all sufficiently large  $\rho \in ]0, \infty[$ .

Note that Theorem 2 shows: If  $f = 0$  on  $] -\infty, a]$ , so is  $u$  on  $] -\infty, a]$ .

We plan to approach the eddy current approximation within this abstract framework, which simplifies matters in so far as we can deal with the time-dependent situation under very general assumptions on the coefficients, which can indeed be operators acting in the underlying spatial Hilbert space.

### 3 | CONVERGENCE TO THE EDDY CURRENT MODEL

#### 3.1 | Maxwell's equations with general material laws

Maxwell's equations with a general, simple material law read

$$(\partial_0 M + N + A) \begin{pmatrix} E \\ H \end{pmatrix} = \begin{pmatrix} -J \\ K \end{pmatrix}, \quad A := \begin{pmatrix} 0 & -\text{curl} \\ \text{curl} & 0 \end{pmatrix}.$$

Here,  $\text{curl}$  is defined as the closure in  $L^2(\Omega, \mathbb{C}^3)$  of the classical vectoranalytic operation  $\text{curl}$  on  $C_1(\Omega, \mathbb{C}^3)$ -vector fields with compact support in the nonempty open set  $\Omega \subseteq \mathbb{R}^3$ , which is obviously symmetric in  $L^2(\Omega, \mathbb{C}^3)$  and therefore indeed closable.

We define

$$\text{curl} := \text{curl}^*,$$

which is nothing but the classical weak  $L^2(\Omega, \mathbb{C}^3)$ -curl. Because of the structure of  $A$  as

$$A = \begin{pmatrix} 0 & -\text{curl}^* \\ \text{curl} & 0 \end{pmatrix},$$

we read off that  $A$  is skew-selfadjoint. Since every closed, linear operator gives rise to a canonical Hilbert space by equipping its domain with the graph inner product, we have Hilbert spaces

$$H(\text{curl}), \quad H(\text{curl}^*)$$

from the respective domains  $D(\text{curl}^*)$ ,  $D(\text{curl})$ . One frequently finds already  $H(\text{curl}^*)$  defined in terms of boundary traces, which unnecessarily limits the applicability of the results. Even worse, it suggests to the uninitiate or confused reader that boundary regularity is required to ensure that the physical model actually works. We note that since

$$\text{curl}^* = \text{curl}^* \subseteq \text{curl},$$

we have for  $E \in H(\text{curl}^*)$ , with  $\langle \cdot \mid \cdot \rangle_{L^2}$  denoting the inner product of  $L^2(\Omega, \mathbb{C}^3)$  that

$$\langle E \mid \text{curl} \Psi \rangle_{L^2} = \langle \text{curl}^* E \mid \Psi \rangle_{L^2} = \langle \text{curl} E \mid \Psi \rangle_{L^2}$$

for all  $\Psi \in H(\text{curl})$ . We read off that conversely

$$\langle E | \text{curl } \Psi \rangle_{L^2} = \langle \text{curl } E | \Psi \rangle_{L^2} \quad \text{for all } \Psi \in H(\text{curl})$$

characterizes  $E \in H(\text{curl})$ . This shows that

$$E \in H(\text{curl})$$

is a suitable generalization of the electric boundary condition for the topological boundary of arbitrary nonempty open sets.

According to the above abstract framework, the solvability constraint on the operator coefficients  $M = M_0, N = M_1$  is

$$\rho M + \Re N \geq c > 0$$

for some real constant  $c$  and all sufficiently large  $\rho \in ]0, \infty[$ . The underlying Hilbert space is  $H = L^2(\Omega, \mathbb{C}^6)$ . We recall that causality of the solution operator is also implied by our general framework.

### 3.2 | Classical electrodynamics and the eddy current problem

On this basis, we are now able to discuss the limiting behavior to the eddy current case. Let

$$M_s := \begin{pmatrix} \varepsilon_s & 0 \\ 0 & \mu_s \end{pmatrix}, \quad N_s := \begin{pmatrix} \sigma_s & 0 \\ 0 & 0 \end{pmatrix}, \quad s \in [0, 1[.$$

Assuming that for some  $\hat{\rho} \in ]0, \infty[$ , we have for all  $\rho \in ]\hat{\rho}, \infty[$  and all  $s \in [0, 1[$

$$\rho M_s + N_s \geq c > 0,$$

we have uniform boundedness for the solution operators in the sense that

$$\|(\partial_0 M_s + N_s + A)^{-1}\| \leq \frac{1}{c}$$

for  $s \in [0, 1[$ . On the other hand, we have the following resolvent equation type result for the solution operators:

$$(\partial_0 M_s + N_s + A)^{-1} - (\partial_0 M_0 + N_0 + A)^{-1} = (\partial_0 M_s + N_s + A)^{-1}((M_0 - M_s)\partial_0 + N_0 - N_s)(\partial_0 M_0 + N_0 + A)^{-1}.$$

If now

$$M_s \xrightarrow{s \rightarrow 0+} M_0, \quad N_s \xrightarrow{s \rightarrow 0+} N_0 \quad \text{strongly in } L^2(\Omega, \mathbb{C}^6),$$

we read off that we have

$$(\partial_0 M_s + N_s + A)^{-1} F \xrightarrow{s \rightarrow 0+} (\partial_0 M_0 + N_0 + A)^{-1} F \quad \text{for every } F \in D(\partial_0).$$

Because of the uniform boundedness of the solution operators, however, we can use the density of  $D(\partial_0)$  in  $H_\rho(\mathbb{R}, L^2(\Omega, \mathbb{C}^6))$  and the above  $H_\rho(\mathbb{R}, L^2(\Omega, \mathbb{C}^6))$ -convergence for elements in  $D(\partial_0)$ . In fact, we get

$$(\partial_0 M_s + N_s + A)^{-1} F \xrightarrow{s \rightarrow 0+} (\partial_0 M_0 + N_0 + A)^{-1} F \quad \text{for every } F \in H_\rho(\mathbb{R}, L^2(\Omega, \mathbb{C}^6))$$

by the principle of uniform boundedness,\* ie, strong convergence of the solution operators. In cases, where  $\varepsilon_0$  vanishes, ie,  $\varepsilon_0|_{L^2(\Omega)^3} = 0$ , we have the case of the eddy current approximation. We note that the usually considered case assumes  $\Omega = \mathbb{R}^3$ .

Let us conclude with some remarks:

- The above rationale clearly also works for completely general sequences  $(M_s)_s, (N_s)_s$  with  $M_s^* = M_s$  of continuous linear operators converging strongly to  $M_0$  and  $N_0$  with

$$\rho M_s + \Re N_s \geq c > 0$$

\*Indeed, more explicitly, for  $F \in H_\rho(\mathbb{R}, L^2(\Omega, \mathbb{C}^6))$  and  $\tilde{F} \in D(\partial_0)$ , we see

$$\begin{aligned} & |(\partial_0 M_s + N_s + A)^{-1} F - (\partial_0 M_0 + N_0 + A)^{-1} F|_\rho \leq |(\partial_0 M_s + N_s + A)^{-1} \tilde{F} - (\partial_0 M_0 + N_0 + A)^{-1} \tilde{F}|_\rho \\ & + |(\partial_0 M_s + N_s + A)^{-1} (F - \tilde{F})|_\rho + |(\partial_0 M_0 + N_0 + A)^{-1} (\tilde{F} - F)|_\rho \leq |(\partial_0 M_s + N_s + A)^{-1} \tilde{F} - (\partial_0 M_0 + N_0 + A)^{-1} \tilde{F}|_\rho + \frac{2}{c} |F - \tilde{F}|_\rho, \end{aligned}$$

from which the desired convergence result follows by first choosing  $\tilde{F} \in D(\partial_0)$  to make the last term sufficiently small (independently of  $s \in [0, 1[$ ) and then, for this fixed choice of  $\tilde{F}$ , we choose  $s_0 \in ]0, 1[$  sufficiently small to make the first term sufficiently small for all  $s \in ]0, s_0[$ .

for some  $c \in ]0, \infty[$  and all  $s \in [0, 1[$ . We have focused on the classical eddy current context to make the approach more tangible.

- Again, we emphasize that our results depend
  - a. neither on the size (bounded or unbounded)
  - b. nor on the topology (genus, Betti-numbers)
  - c. nor on the regularity (no regularity is assumed)

of the underlying domain resp nonempty open set  $\Omega$ . Moreover, our methods extend immediately to domains resp nonempty open sets  $\Omega \subset \mathbb{R}^N$ ,  $N \in \mathbb{N}$ , or even to Riemannian manifolds  $\Omega$  by replacing the curl-operators by the exterior resp coderivative.

- Our results remain valid even if mixed boundary conditions are considered. We just have to modify the skew-selfadjoint unbounded linear operator  $A$  by

$$A = \begin{pmatrix} 0 & -\text{curl}_{\Gamma_1}^* \\ \text{curl}_{\Gamma_1} & 0 \end{pmatrix} = \begin{pmatrix} 0 & -\text{curl}_{\Gamma_2} \\ \text{curl}_{\Gamma_1} & 0 \end{pmatrix}.$$

Here, the boundary  $\Gamma := \partial\Omega$  is decomposed into, let us say 2 relative open disjoint subsets  $\Gamma_1 \neq \Gamma$  and  $\Gamma_2 := \Gamma \setminus \overline{\Gamma_1}$ . Following our definitions from above, we define  $\text{curl}_{\Gamma_1}$  as the closure in  $L^2(\Omega, \mathbb{C}^3)$  of the curl-operator acting on the restrictions to  $\Omega$  of  $C_1(\mathbb{R}^3, \mathbb{C}^3)$ -vector fields having compact support in  $\mathbb{R}^3$  bounded away from the boundary part  $\Gamma_1$  as well as

$$\text{curl}_{\Gamma_2} := \text{curl}_{\Gamma_1}^*.$$

Once more, the structure of  $A$  shows that  $A$  is skew-selfadjoint.

- It is also clear that for uniform convergence of the coefficients, we get uniform convergence of the solution operators in the sense that

$$\partial_0^{-1}(\partial_0 M_s + N_s + A)^{-1} \xrightarrow{s \rightarrow 0^+} \partial_0^{-1}(\partial_0 M_0 + N_0 + A)^{-1}$$

in  $\mathcal{L}(H_\phi(\mathbb{R}, L^2(\Omega, \mathbb{C}^6)), H_\phi(\mathbb{R}, L^2(\Omega, \mathbb{C}^6)))$ .

### 3.3 | A realistic case

For illustrational purposes, we conclude with a realistic example, where the above limit situation occurs, eg, an electromagnetic field in the presence of a laminated iron core in air (possibly with an air gap). Whereas in air the standard Maxwell equations are used, in the iron core the eddy current model is frequently assumed, see Figure 1. A possible, simple description would be that  $\mu > 0$  is a constant and  $\varepsilon$  and  $\sigma$  are piecewise constant with

$$\varepsilon = \begin{cases} \varepsilon_{\text{air}} & \text{in air,} \\ \varepsilon_{\text{lam}} & \text{in the insulating parts of the laminated iron core,} \\ \varepsilon_{\text{cor}} & \text{in the metal parts of the laminated iron core,} \end{cases}$$

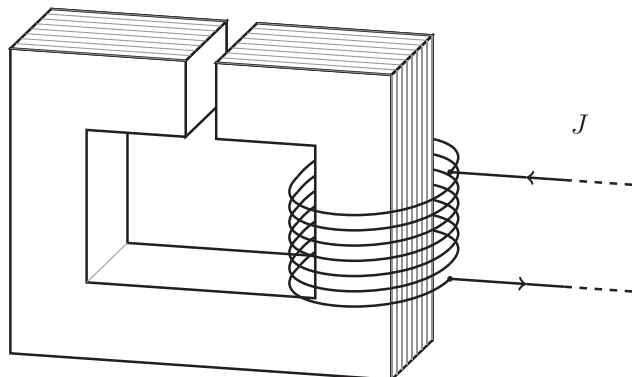


FIGURE 1 Laminated iron core in air

and

$$\sigma = \begin{cases} 0 & \text{in air,} \\ 0 & \text{in the insulating parts of the laminated iron core,} \\ \sigma_{\text{cor}} & \text{in the metal parts of the laminated iron core,} \end{cases}$$

for  $\varepsilon_{\text{air}}, \varepsilon_{\text{lam}}, \varepsilon_{\text{cor}}, \sigma_{\text{cor}}$  positive numbers. In the above, we have established that replacing the—relative to  $\sigma_{\text{cor}}$ —small value of the dielectricity  $\varepsilon_{\text{cor}}$  can indeed be replaced by zero, ie,  $\varepsilon_{\text{cor}} = 0$ . In this situation, the approximation result holds for any  $\rho \in ]0, \infty[$ .

## ACKNOWLEDGEMENT

We cordially thank Immanuel Anjam for creating the picture.

## REFERENCES

1. Rodríguez AA, Valli A. *Eddy Current Approximation of Maxwell Equations. Theory Algorithms and Applications*. Springer: Milano; 2010.
2. Ammari H, Buffa A, Nédélec J-C. A justification of eddy currents model for the Maxwell equations. *SIAM J Appl Math*. 2000;60(5):1805-1823.
3. Picard R. On the low frequency asymptotics in electromagnetic theory. *J Reine Angew Math*. 1984;354:50-73.
4. Weck N, Witsch K-J. Complete low frequency analysis for the reduced wave equation with variable coefficients in three dimensions. *Comm Partial Differential Equations*. 1992;17(9-10):1619-1663.
5. Weck N, Witsch K-J. Generalized linear elasticity in exterior domains – I Radiation problems. *Math Methods Appl Sci*. 1997;20(17):1469-1500.
6. Weck N, Witsch K-J. Generalized linear elasticity in exterior domains – II Low-frequency asymptotics. *Math Methods Appl Sci*. 1997;20(17):1501-1530.
7. Pauly D. Niederfrequenzasymptotik der Maxwell-Gleichung im inhomogenen und anisotropen Außengebiet. *Dissertation*, Universität Duisburg-Essen, Fakultät für Mathematik, 2003. <http://duepublico.uni-duisburg-essen.de>.
8. Pauly D. Complete low frequency asymptotics for time-harmonic generalized Maxwell equations in nonsmooth exterior domains. *Asymptotic Analysis*. 2008;60(3-4):125-184.
9. Pepperl T. Niederfrequenzasymptotik und Wirbelstrom-Approximation der verallgemeinerten dissipativen Maxwell-Gleichungen. *Dissertation*, Universität Duisburg-Essen, Fakultät für Mathematik, 2006. <http://duepublico.uni-duisburg-essen.de>.
10. Ammari H, Nédélec J-C. Low-frequency electromagnetic scattering. *SIAM J Math Anal*. 2000;31(4):836-861.
11. Picard R.. An elementary hilbert space approach to evolutionary partial differential equations. *Rend Istit Mat Univ Trieste*. 2010;42 suppl.: 185-204.
12. Picard R, McGhee DF. *Partial Differential Equations: A Unified Hilbert Space Approach*. Berlin, New York: De Gruyter; 2011:p. 518.

**How to cite this article:** Pauly D, Picard R. A note on the justification of the eddy current model in electrodynamics. *Math Meth Appl Sci*. 2017;40:7104–7109. <https://doi.org/10.1002/mma.4515>